

# SmartGuide™

Fleet Tracking Solution



## Powerful. Intelligent. Aware.



SmartGuide™, powered by Numerex®, offers a turnkey solution for fleet management, driver behavior, and monitoring of tracked drivers and vehicles. This solution deploys rapidly and provides increased ROI, productivity improvement and enhanced safety for drivers and vehicles. SmartGuide's cloud-based platform is network agnostic and encompasses global cellular or satellite plans offered through one point of contact.

### FEATURES

Driver, vehicle, and summary fleet reporting, featuring email and text alerts

State mileage reporting, driver behavior alerts

Point of interest routing and route replay

Integrates with GARMIN® fleet in-cab devices

Supports GIS data integration

### BENEFITS

Anywhere, anytime monitoring of tracked drivers and vehicles

Increased driver and vehicle safety

Reduced maintenance costs

Improves fleet time management and workforce utilization

Route mileage and maintenance optimization



Device

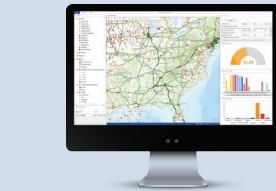


Numerex Network Solutions



SmartGuide

**SmartGuide - Track. Monitor. Optimize. Secure.**



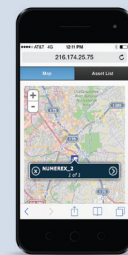
Fleet Management Dashboard



Fleet Report Card



Driver Score Card



Mobile Application